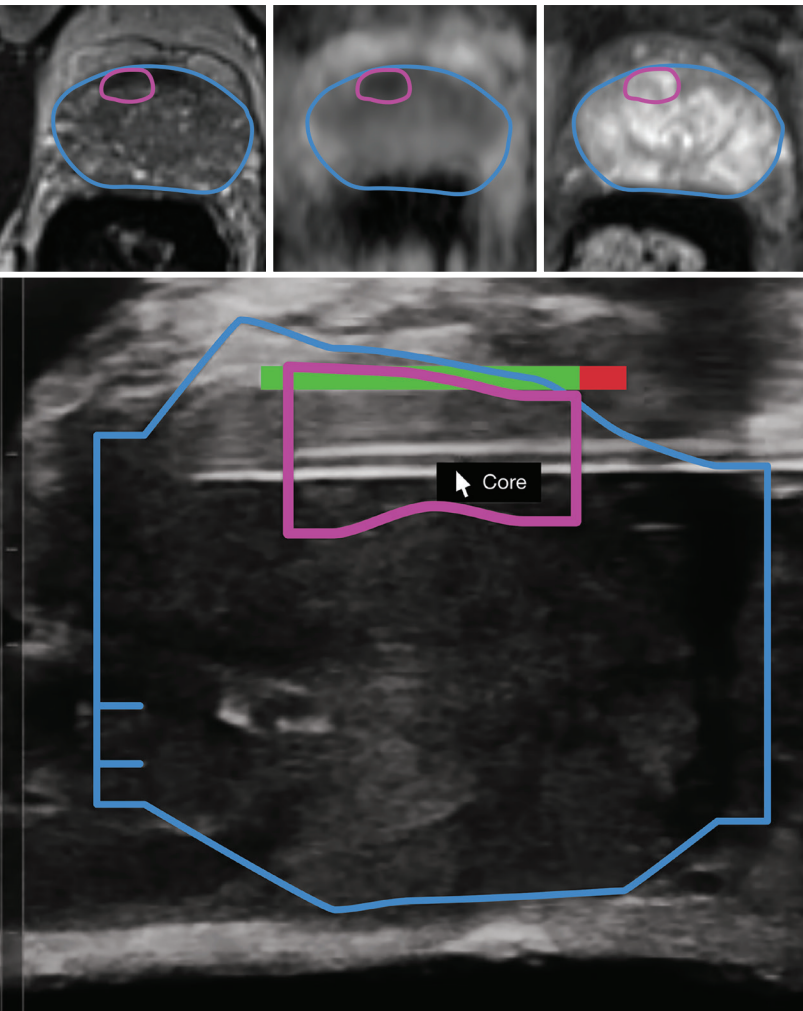




A Collaborative Suite for Radiology and Urology

# MR Fusion Biopsy

The new standard in prostate imaging for cancer detection is multi-parametric MR. Until now, urologists have not been able to effectively use this targeted information to guide their biopsy sampling. MIM Symphony Bx™ is changing this with powerful but easy-to-use tools for MR-US fusion for biopsy guidance.

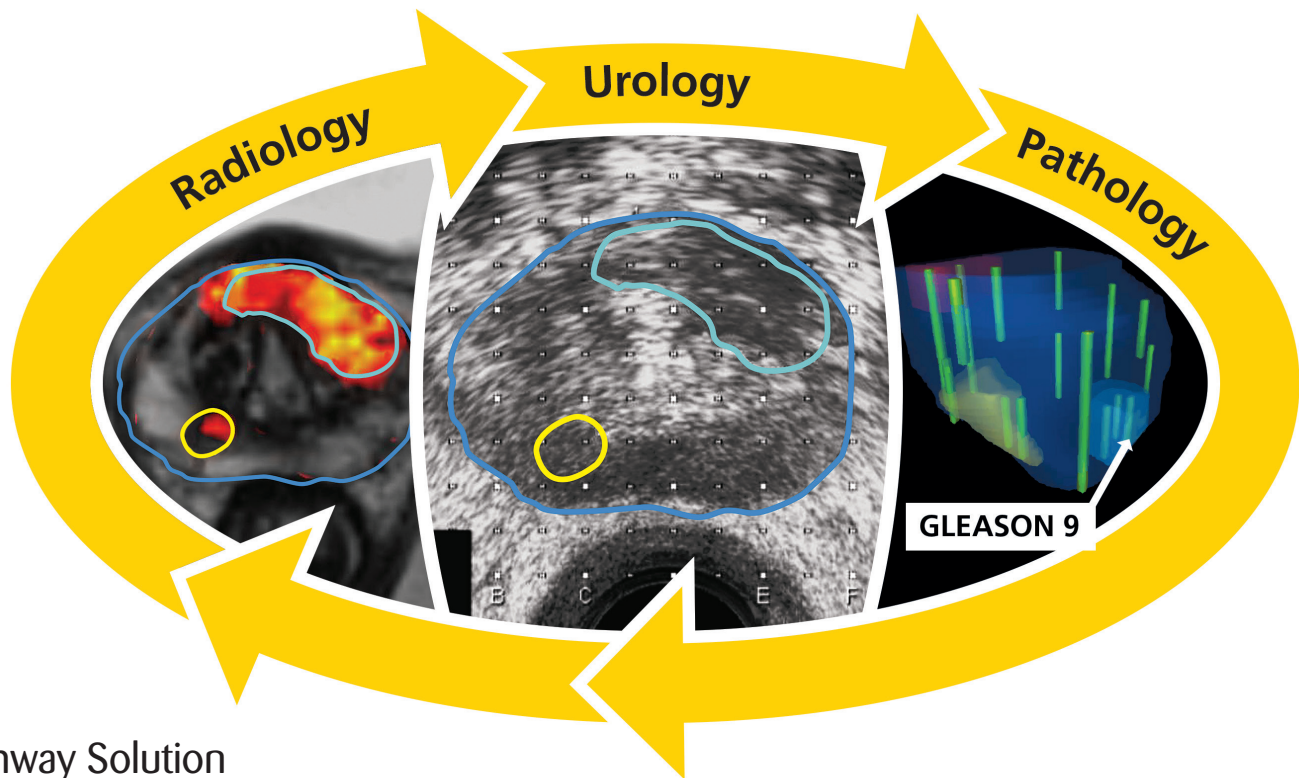


## MR Fusion Biopsy

At the start of the procedure, the urologist is only a few clicks away from displaying radiologist-defined MR targets on a live TRUS image. Using a point-and-shoot approach, the targets can be sampled and the precise locations of the samples recorded. With very little additional time compared with random biopsies, samples can now be targeted to areas of highest suspicion for greater yield and more accurate staging.

*"The advantages of using the MIM Symphony system are multiple. Before we even take the biopsies, there is less planning for me to do because the radiologists have done it. In theatre, we need less time. We are more precise because we are taking biopsies in the actual areas cancer is likely to be. The side effects for the patients are much less. Overall, it is a much better experience for the patient, the urologist, and the radiologist."*

**MR. MARK LANIADO**  
Consultant Urological Surgeon  
Heatherwood & Wexham Park Hospital NHS Trust



## Pathway Solution

Nobody benefits more from accurate diagnostic tools than the patient. However, the benefits don't stop with the biopsy. MIM Symphony is a powerful and unique pathway solution for prostate cancer management from the initial review all the way to treatment guidance and follow-up. MIM Symphony gives radiologists specialized tools to make their initial review more efficient and their reports richer and more quantitative. With

Reslicer™, the radiologist or urologist can prepare the contours for fusion biopsy by reorienting the MR to match the TRUS images—making fusions nearly instantaneous. Correlation of biopsy location, pathology results, and initial imaging provides

valuable and quantitative information for tracking disease with repeat imaging and biopsies. Active Surveillance can be utilized more safely and with greater confidence. Treatment decisions can be tailored more accurately to each individual patient due to better staging. And with fusion, treatments can be targeted with the same ease and speed as the initial biopsy.

“*The software not only renders the whole process more efficient, but actually makes the both radiologist's and the urologist's lives easier.*”

*“One of the great and unique things about MIM Symphony is that it is a pathway solution. It can be implemented at the beginning when the PSA is high and also 10, 15 years later when that prostate is being reimaged. The software not only renders the whole process more efficient, but actually makes both the radiologist's and the urologist's lives easier.”*

**PROFESSOR MARK EMBERTON**  
Professor of Interventional Oncology  
University College London

**WITH MIMCLOUD™**, each caregiver has instant access to all previous images, biopsies, and treatments. At each step along the management of a patient's prostate cancer, changes can be monitored and quantified. With MIMcloud's unique patient portal, not only is collaboration among caregivers now seamless, but caregivers can now clearly communicate key information to every patient.





## MIM Software Inc.

25800 Science Park Drive - Suite 180  
Cleveland, OH 44122

866-421-2536

[www.mimsoftware.com](http://www.mimsoftware.com)

[info@mimsoftware.com](mailto:info@mimsoftware.com)

[@mimsoftware](https://twitter.com/mimsoftware)

## Beijing MIM Software Corp. Ltd.

北京明维视景医疗软件开发有限公司

地址：北京市海淀区苏州街29号

维亚大厦605室, 邮编100080

电话 86-10-82626590

邮箱 [info@mimsoftware.com](mailto:info@mimsoftware.com)

EC REP

## Emergo Europe

Molenstraat 15

2513 BH The Hague

The Netherlands

CE  
0120

TD-246 5-10-2015